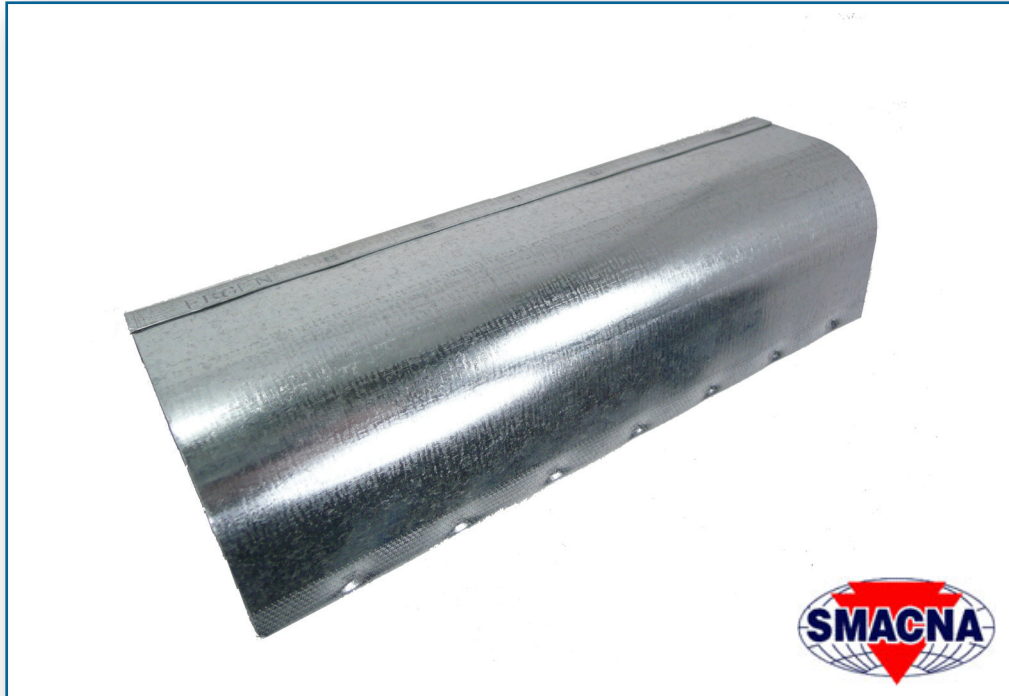




4" VANE



Elgen Manufacturing
300 Murray Hill Parkway, East Rutherford, NJ 07073
(800) 503-9805 :: www.elgenmfg.com

DESCRIPTION

Elgen's 4" Double Wall Turning Vane is used, in conjunction with Elgen's 4" Double Wall Vane Rail, for directing air flow through a rectangular elbow.

SPECIAL FEATURES

- One Dimple per inch
- Can be used with other rail systems
 - Union Made

TECHNICAL INFORMATION

- Conforms To SMACNA
- Rollformed from ASTM A-653 G60/G90 material
- Provides more strength and has less noise than single walled vane

PRODUCT SPECIFICATIONS

Available In:

- Galvanized
- SS#304
- Aluminum

PACKAGING

<u>Length</u>	<u>GA</u>	<u>FT Per Bundle</u>
MT0	20	MT0
MT0	22	MT0
10'	24	50'

PRODUCT GUARANTEE

Elgen's 4" Vane is guaranteed by Elgen Manufacturing against defective material.