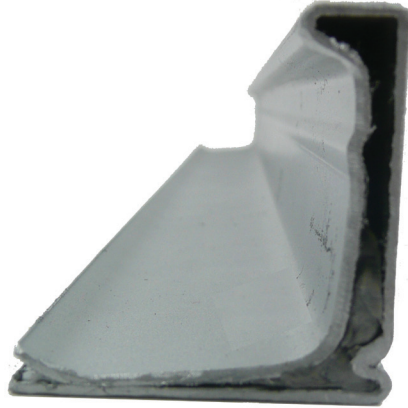




# ***ELGEN FLANGE***



Elgen Manufacturing  
300 Murray Hill Parkway, East Rutherford, NJ 07073  
(800) 503-9805 :: [www.elgenmfg.com](http://www.elgenmfg.com)

## DESCRIPTION

The Elgen Flange is used in conjunction with the Elgen Flange Corner, Elgen's 440 Butyl Gasket, and the Elgen Flange Cleat. The Elgen Flange attaches to the duct wall and has a butyl sealant inside the pocket. The butyl sealant provides an airtight seal along the duct wall.

## BASIC USE

The Elgen Flange is used to connect rectangular ducts and provide a rigid and virtually leak-free connection.

## SPECIAL FEATURES

- Sealing materials meet NFPA 90A & 90B Class 1 requirements.
- The Elgen Flange System is not recommended for applications with duct gauges heavier than 16 GA, or lighter than 26 GA.
  - The Elgen Flange is ribbed for additional strength.
    - Union Made

## TECHNICAL INFORMATION

- The Elgen Flange is tested in accordance to SMACNA requirements- Chapter 11 of 2005 (Test reports available upon request)
  - The Elgen Flange meets SMACNA "J" classification for strength
- The Elgen Flange is manufactured from 20 gauge galvanized material that has a G60 coating thickness. (G90 coating thickness is available upon request)

## PRODUCT SPECIFICATIONS

Available In:

- Galvanized
- SS#304 -SS#316
- Aluminum
- PCD Coated
- Galvanneal (Paint Grip)

## PACKAGING

<u>Length</u>	<u>GA</u>	<u>FT Per Bundle</u>
10'	20	750'
20'	20	1500' & 3000'

## PRODUCT GUARANTEE

Elgen's Flange is guaranteed by Elgen Manufacturing against defective material.